



# ColdTRAK® Data Central

www.coldtrak.com



## Web-Based Data Center

Retrieve, display, analyze and share critical temperature data during transportation or stationary critical points, with peers and partners around the world, with our new web-based application – ColdTRAK® Data Central.



**Compliant with 21 CFR Part 11, ColdTRAK® Data Central fulfills the cold chain management solution needs in Life Science and Chemical applications.**

**Maintain product integrity and SAVE MONEY with the ColdTRAK® Global Cold Chain Solution**

Assuring the stability and shelf life of TATS materials in the critical control points of a cold chain is imperative in today's business world. The ColdTRAK® Global Cold Chain Solution will help you improve your cold chain efficiency through comprehensive information management, and protect your financial interests by better documenting and auditing your cold chain processes.

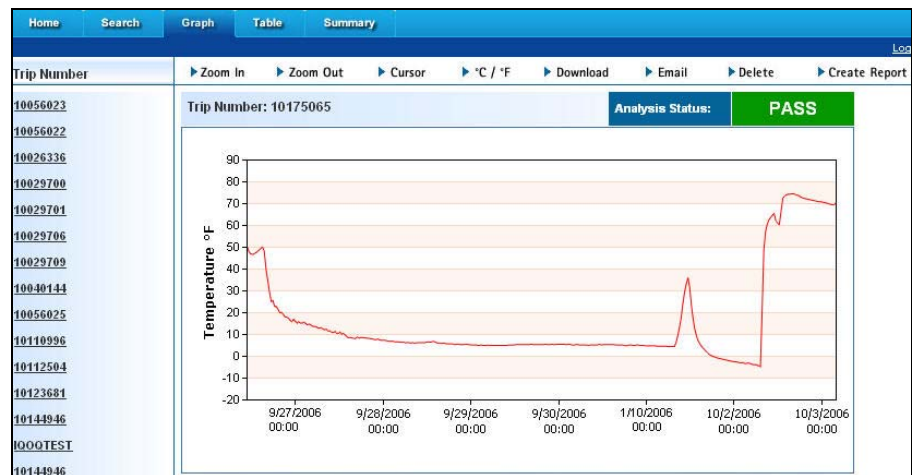
The ColdTRAK® Global Chain Solution includes products and services tailored to help you take control of your cold chain:

- Front-end electronic devices for recording critical time and temperature data
- **Web hosting and data management services - www.coldtrak.com**
- Software for displaying, storing and analyzing data, with customizable features
- On-site installation, validation and training

### Features

- Quick view of temperature data and graphs
- Advanced search and analytical capabilities
- Easy and intuitive navigation
- Customizable reports
- Multi-graph view features
- Secured access
- Administrative privileges at a company level
- Permission-based user profiles
- Customizable alarms and user notifications
- Built-in emailing interface for sending fast messages and PDF reports
- Internal messaging system to guide users
- 21 CFR Part 11 compliance
- MKT calculation as accepted by FDA

### Trip View



### Benefits

- Access a centralized database 24/7, from anywhere in the world.
- View graphs just minutes after the data loggers are downloaded at your receiving facility.
- Make quick product acceptance/rejection decisions.
- Improve your decision making process by identifying trends and temperature abuse patterns.
- Ensure product **QUALITY** and **SAFETY** while documenting compliance with **FDA, USP, USDA** and **NADCAP** requirements.





## Take Instant Action

The ColdTRAK<sup>®</sup> Data Central provides you with simple but powerful search capabilities that will help you quickly analyze data derived from the FlashLink<sup>®</sup> data loggers and identify temperature violations. This allows you to take immediate action and reduce lost revenues caused by food spoilage and shrink. Access information securely any time and from anywhere in the world, no matter where your products are received.

## Critical Control Points to Measure Temperature

### In transit:

- Manufacturing/Distribution - to – EU: Manufacturer or Distributor shipping to End-User (EU)
- Warehouse/Drug Depot – to – End-User: Monitoring truck delivery routes

### Stationary:

- At the Warehouse, Clinic and Drug Depot: monitoring storage environmental conditions, ensuring preventive maintenance and reducing risks

## What Do You Need

- In-Transit FlashLink<sup>®</sup> Data Loggers for your shipments, from the manufacturer/distributor to End-User
- Reusable FlashLink<sup>®</sup> Data Loggers, Model 20200, for your routed shipments from a warehouse or drug depot to end-users, or for the temperature critical storage and displaying points.
- A computer connected to the Internet and an Internet browser.
- The **FREE ColdTRAK<sup>®</sup> Manager Software** available at [www.coldtrak.com](http://www.coldtrak.com).

Contact us to see a demo or register for a 30-day **FREE TRIAL** at [www.coldtrak.com](http://www.coldtrak.com)



P.O. Box 398, Pleasanton, CA 94566  
 (800) 962-6776; (925) 249-2250  
 Fax: (925) 249-2251  
 Email: [salesinfo@deltatrak.com](mailto:salesinfo@deltatrak.com)  
[www.deltatrak.com](http://www.deltatrak.com)

## Search View

Home Search Logout Help

View Download Email Delete Multi-Graph Create Report

Category Selection  
 \* Category: Supplier to DC

Search

By Time of Entry into DB: From: Current Month to Now From: [ ] To: [ ] MM/DD/YYYY

By Data Start Time: From: Last 24 hours From: [ ] To: [ ] MM/DD/YYYY

By Data Stop Time: From: Last 24 hours From: [ ] To: [ ] MM/DD/YYYY

By Individual Data Tags: By Order Number [ ]

By Dual Data Tags: By Order Number AND By Order Number [ ] [ ]

By Analysis Results: Test Results Pass [ ] Fahrenheit

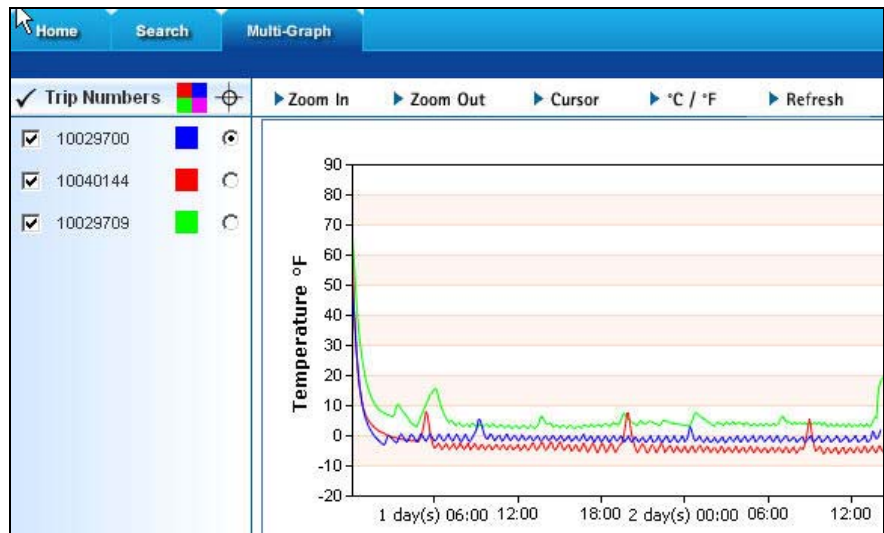
Sort  
 By: Date / Time Order: Ascending

Results	Trip #	Time of Entry	Start Time	Stop Time	Order Number	Shipper	Receiver	Contents
<input type="checkbox"/>	10058022	3/8/2007 11:34:10 AM	6/2/2006 11:07:35 AM	6/6/2006 1:32:41 AM	order009	shipper001	receiver006	Product 1
<input type="checkbox"/>	10110996	3/8/2007 11:44:01 AM	7/2/2006 11:11:33 AM	7/5/2006 4:04:39 AM	order008	shipper005	receiver006	Product 1

## Improve Your Decision Making Process

The Multi-Graph view along with the integrated reporting features allows you to easily evaluate critical situations and determine patterns. By storing all data in a central database and by using the analytic capabilities of the integrated web-based tools, you will be able to identify frequent temperature abuse patterns, determine trends and drive down operating cost while assuring product stability and reducing loss.

## Multi-Graph View



Since 1989, DeltaTRAK has been manufacturing the highest quality portable test instruments and software that monitor and record temperature, humidity, and pH parameters. Products and services are sold worldwide to customers in over 40 countries. Headquartered in Pleasanton, California, DeltaTRAK also has R & D offices in San Diego, California, an ISO 9001 registered manufacturing and distribution facility in Modesto, California and an ISO 9001 registered electronic assembly operation in Shenzhen, China.

